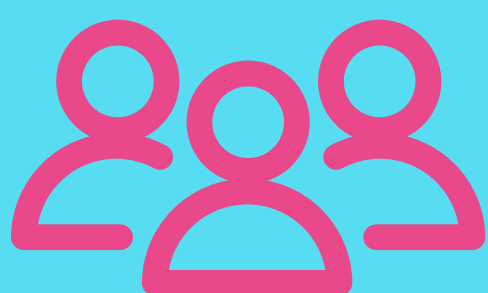


Tips to keep your PAES lab student safe during Covid-19

PER CDC GUIDELINES (MAY 2020)



1.) MAINTAIN SOCIAL DISTANCING

- Stagger "employees" entering the lab to limit bunching up around the time clock and shelves.
- Work stations 6 feet apart when possible.
- Distance while "supervisor" is checking completed work.

2.) MAINTAIN GOOD HYGIENE

- Make sure "employees" have access to running water to wash hands and/ or hand sanitizer.
- Post reminders to cough or sneeze into elbow or tissue and toss immediately.
- Keep tissues accessible.



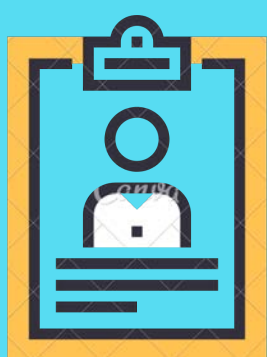
3.) PERHAPS SOME PPE?

Require "employees" to put on gloves and a mask before entering to limit ability to cross contaminate through shared resources (time clock, computers, etc...)

4.) SANITIZE

Have "employees" sanitize items and tools during the disassembly process.

Supervisors should wipe down shared surfaces between shifts.



5.) CHECK CDC GUIDELINES FOR CHANGES

As we learn more, needs may change. PAES is a simulated work environment; so, learning how to work safely now, will support participants on the job in the community.
<https://www.cdc.gov/>



TALENT ASSESSMENT, INC.

PO BOX 5087
JACKSONVILLE, FL 32247
800.634.1472

WWW.TALENTASSESSMENT.COM